

Concept Mapping

Inspiration for Nova5000 Sales Script

Inspiration is the Nova5000's concept mapping software. This tutorial will walk you through the basic Inspiration functionality.

Introduction

The key benefits/features of Inspiration for the Nova5000 shown in this tutorial:

- Develops ideas and organizes thinking, helping students to think and learn visually.
- Allows you to create a picture of your ideas or concepts in the form of a diagram.
- Provides an integrated outlining environment to develop your ideas into organized written documents.

Inspiration's combination of visual and linear thinking helps deepen understanding of concepts, increase memory retention, develop organizational skills and tap creativity.

Launch Inspiration: **Start > Programs > Inspiration**. Go to **File > New** to clear any previously saved document.

Creating a graphic organizer

You can experience the student gathering and organizing information for a report about Alexander Graham Bell. We will only follow the first few steps to get a basic idea of how to build a document in Inspiration.

Tap on the Title bar. Under the File menu, tap New.

Diagram View & Main Idea

Enter "Alexander Bell" into the Main Idea symbol. Use either the virtual keyboard or USB keyboard.

Creating links and shapes with a stylus

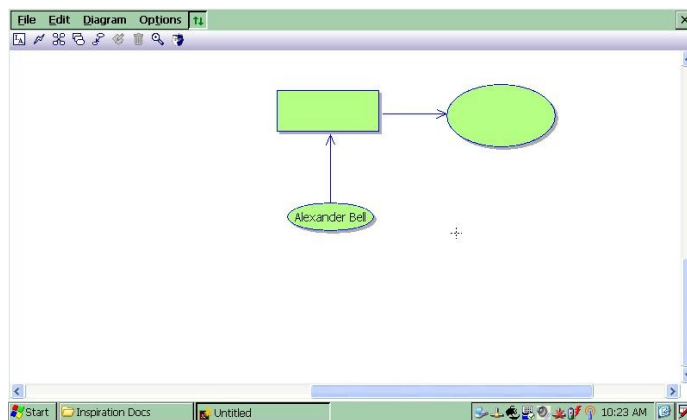
One of the exciting things about the Nova5000 is the **ability to use the stylus to sketch links and symbols directly on screen**.

Create a link by tapping on the diamond link handle and drawing out a link.

Drag from top diamond link handle of "Alexander Bell" to upper middle portion of screen.

You can also draw shapes like rectangles, ovals, circles and diamonds. Then you can link them together.

Sketch a rectangle to connect to the link directly above "Alexander Bell" and an oval to the right. Drag a link from "Alexander Bell" to the oval.




Entering text

For this report, the student will include information about Alexander Bell's early life and the traits that made him a good inventor.

Select the rectangle symbol and enter "Early Life," then select the oval and enter "Traits." You can enter text by keyboard or with graffiti by using a stylus.

Enter the word "Early Life" in the rectangle up top. Enter "Traits" in the oval on the right.


Outline View

Inspiration has an integrated **Outline View**. When you tap on the Outline View button , you can see that all of the information and their relationships from the graphic organizer have automatically transformed into a traditional outline.

Make sure the "Alexander Bell" is selected. Tap on Outline View button.

Add topic

You can easily add more thoughts and ideas with the buttons on the toolbar. Tap on the **Add**

Topic button  and include Alexander's most famous invention, the "Telephone."

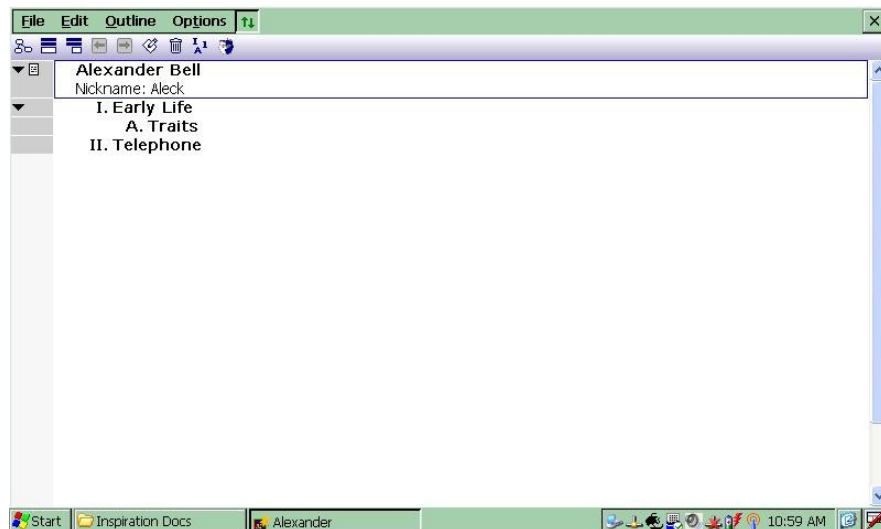
Tap the Add Topic button. Enter "Telephone."

Moving topics


You can also move and rearrange your topics, simply by dragging them. "Early Life" would be a better section to start with in this report, so move it to the top.

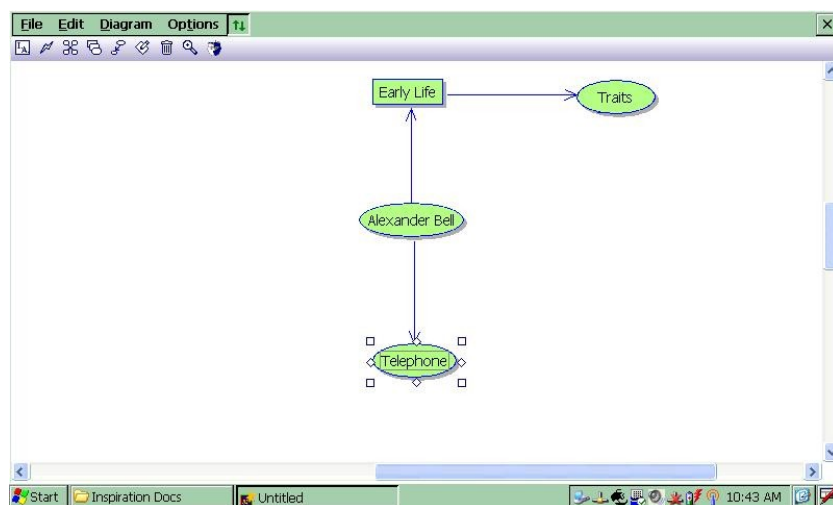
Drag "Early Life" under "Alexander Bell."

Outline View is especially useful after you have gathered your information and want to organize it for writing projects.




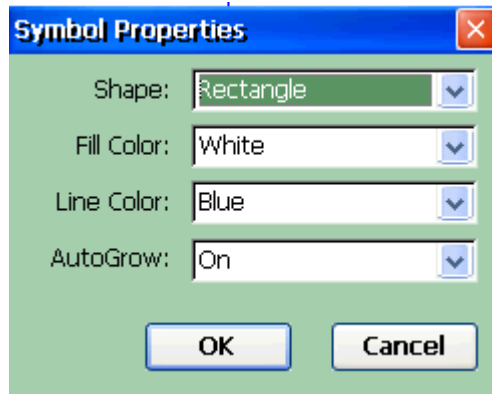
Return to Diagram View

When we return to the Diagram View by tapping on the toolbar button , you'll see that the new topic included in Outline View is now a part of the graphic organizer. *Make sure "Telephone" is selected and tap on the Diagram View button.*



Symbol Properties

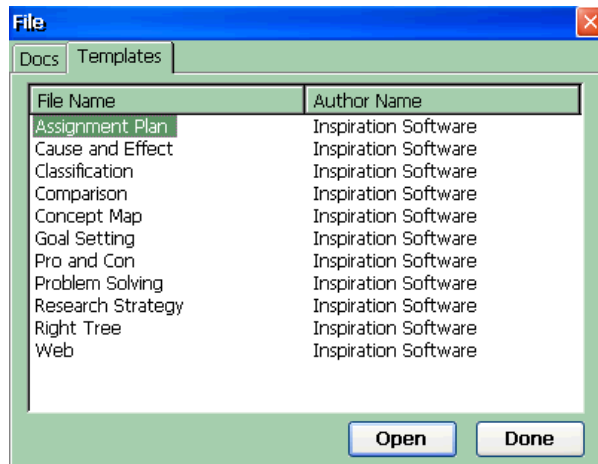
You can also change the shape and color of your symbols to distinguish between ideas or highlight specific thoughts by using the **Symbol Properties** tool. Highlight "Alexander Bell," the main idea. By tapping on the Symbol Properties button , change the shape to a rectangle and its color to white. Leave the line color blue. *Select the "Alexander Bell" symbol. Tap on the Symbol Properties tool button, tap on the Symbol Properties menu. Change the shape to Rectangle and the fill color to White. Tap OK.*



Introducing Templates

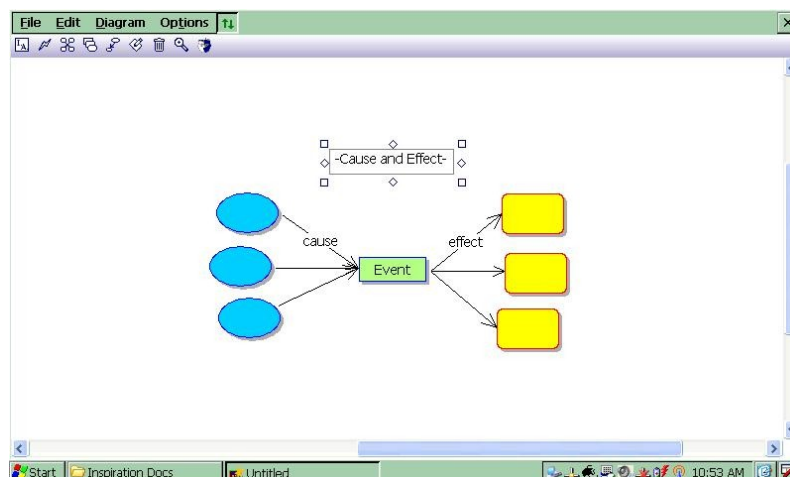
You can also use the ready-made templates included with Inspiration. These templates make getting started easy and provide students with guidelines for them to follow when working on assignments.

Open the list of templates so you can see them.



Inspiration addresses common student assignments and teacher and administrator tasks. Look at **Cause & Effect**.

Tap on the Title bar. Under the File menu, select Open (don't save the document if prompted). Tap the Templates tab. Select Cause and Effect. Tap Open.



Final Example

The Julius Caesar example document in the screen below shows how a completed concept map appears. Here we see the Diagram view, but you can also view the same information in the concept view.

