

Assessment Software

LearnStar for Nova5000 Sales Script

LearnStar for the Nova5000 is interactive educational software that *makes learning fun*. Whole-class activities motivate students and focus their attention resulting in documented test score improvements.

Features include:

- **Academic competitions**
- **Challenging quizzes**
- **Real-time polling**
- **Testing**
- **Performance assessment tools to increase teacher effectiveness**

Pre-tutorial Preparation

This tutorial presupposes that you have successfully installed LearnStar on both PC and Nova5000 and that you can run the LearnStar Directory Service locally from your computer. Ensure each Nova is connected to the wireless network and the LearnStar client is open on each Nova as well.

Important

If you are having trouble registering an activity follow these steps to restart the LearnStar directory service:

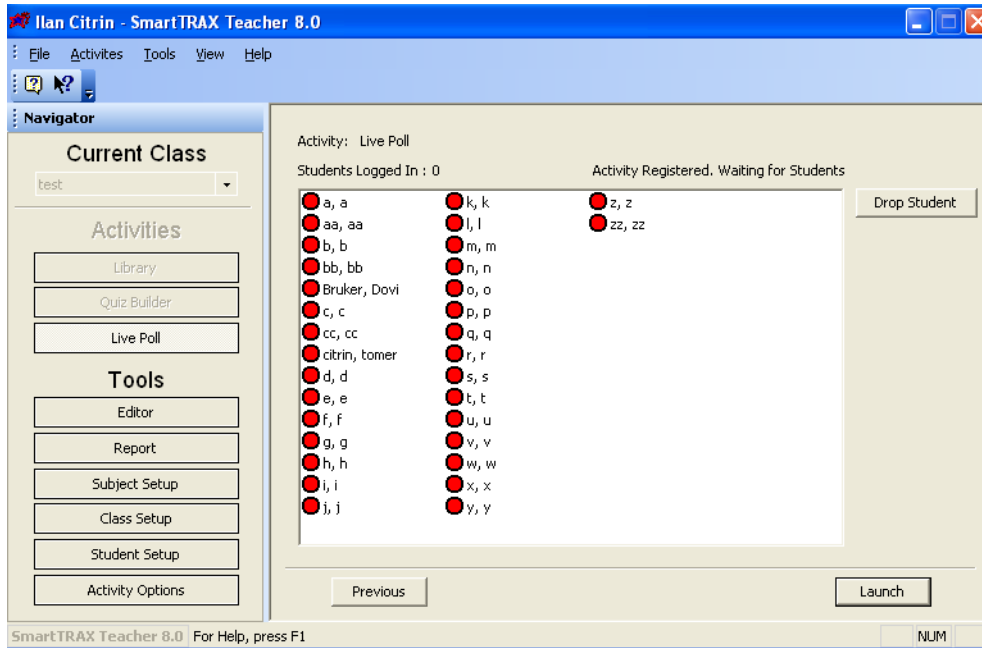
1. Go to the Task Manager (Ctrl-Alt-Delete) and select **Processes**.
2. End the process called **LSDirectorySrv.exe**.
3. Go to the LearnStar directory: C:\Program Files\LearnStar\SmartTrax and double click on **LSDirectorySrv.exe** to run the service again.
4. Go back to the Teacher client and register the activity again.

You'll need at least 2 or 3 Nova to best appreciate the software capabilities.

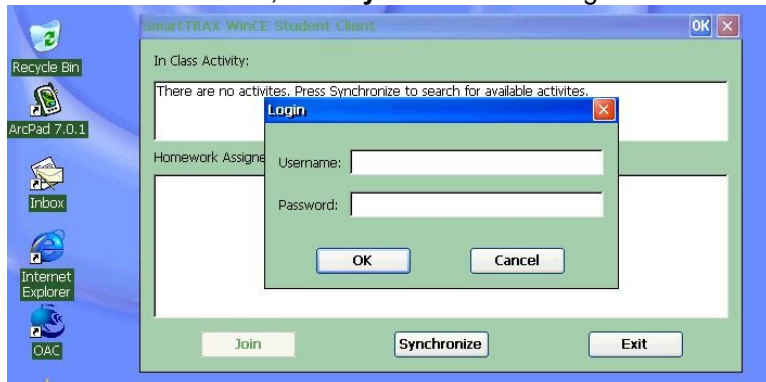
Live Poll Activity

To experience just how fast the response time of the software is, i.e. when you send questions to the Nova and receive the answers back, as well as general ease of use this tutorial will guide you through a **Live Poll**.

1. Launch the **Teacher** module, login and from the Teacher main window select the Class.
 1. you have already created
 2. Click **Live Poll**.
 3. Before continuing.
 - a. Notice that the identity of the participants is anonymous.
 - b. Notice the advantages of Live Poll in the classroom.
 - i. A Pre-Assessment tool for assessing the knowledge level of students on a subject before starting a lesson
 - ii. Reviewing a subject to get an idea of how the lessons are progressing
 - iii. Facilitating discussion on any topic at hand, based on class responses
 4. Click **Next** to register the activity.



.Go to each Nova, click **Synchronize** and login to the LearnStar server.5



.When synchronized, click **Join** to join the current Live Poll activity.6
 Notice how dots next to their name in the student list move from red to green as each
 .Nova logs in

.When all of the Nova's have logged in, click **Launch** on the Teacher client.7

Type in a question in the dialog box. You can format the text (change font size, color, .8
 (.etc

Live Poll - New Question [X]

Font: Arial [v] **B** *I* U ~~S~~

Question:
What is the capital of England?

Choices:

Manchester

London

Birmingham

Newcastle

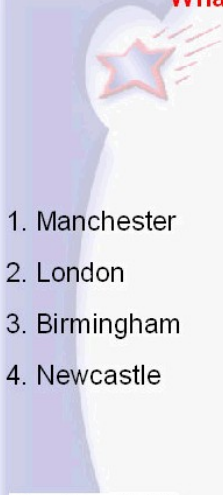
[]

OK Cancel

9. Click **OK** and the question will appear on the Nova.

Answer Now

What is the capital of England?



1. Manchester

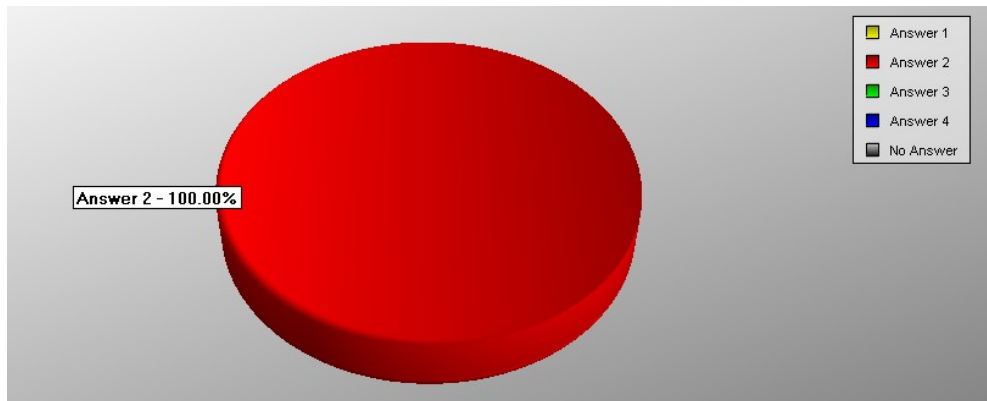
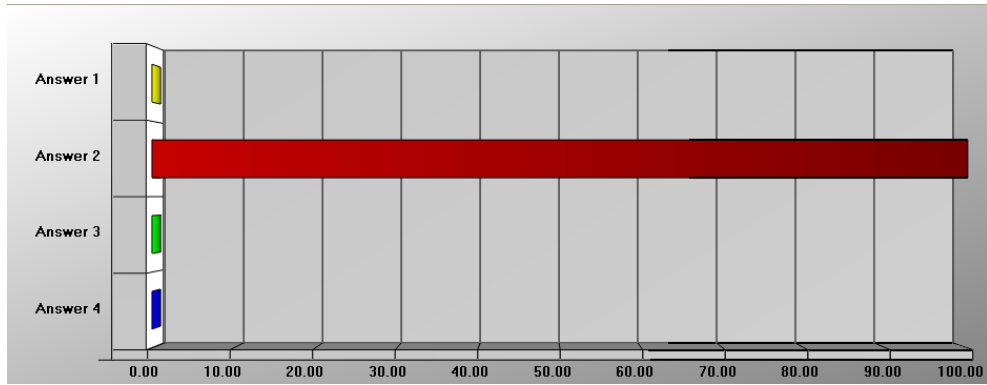
2. London

3. Birmingham

4. Newcastle

Question 3 of 3

10. Your "Nova Students" can tap their answers on the Nova screen.
 All results are saved in the Reports database, where teachers have a record of student answers for each poll.
11. The answers will be instantly displayed in the Teacher client, in either a Bar Graph or Pie Chart. Click **Toggle** to move between the two views.



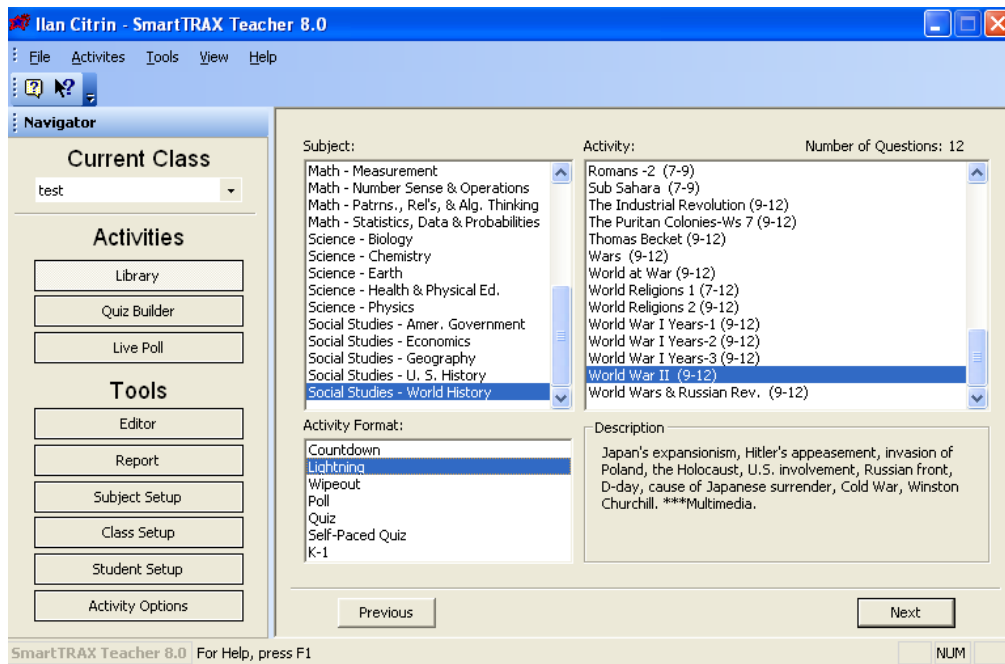
Library Activity

There is a vast library of curriculum-correlated questions which are built-in to the LearnStar software. The extensive database of thousands of questions, answers and coaching clues are directly aligned to embedded state learning objectives.

Students react positively to fun, interactive learning events such as LearnStar's competition-based quizzes. The key benefits are:

- **Enhance lesson plans with interactive, whole-class activities**
- **Motivate students using clues to help them improve**
- **Involve the entire class in motivating activities**
- **Increase Standardized Test Scores**

1. Launch the **Library** activity from the main Teacher module.
2. Select a **Library**, such as *Middle*, and a **Subject**, such as *World History*, and an **Activity**, such as *World War II*.



3. Select the **Activity Format**, such as Lightning. Click **Next**.

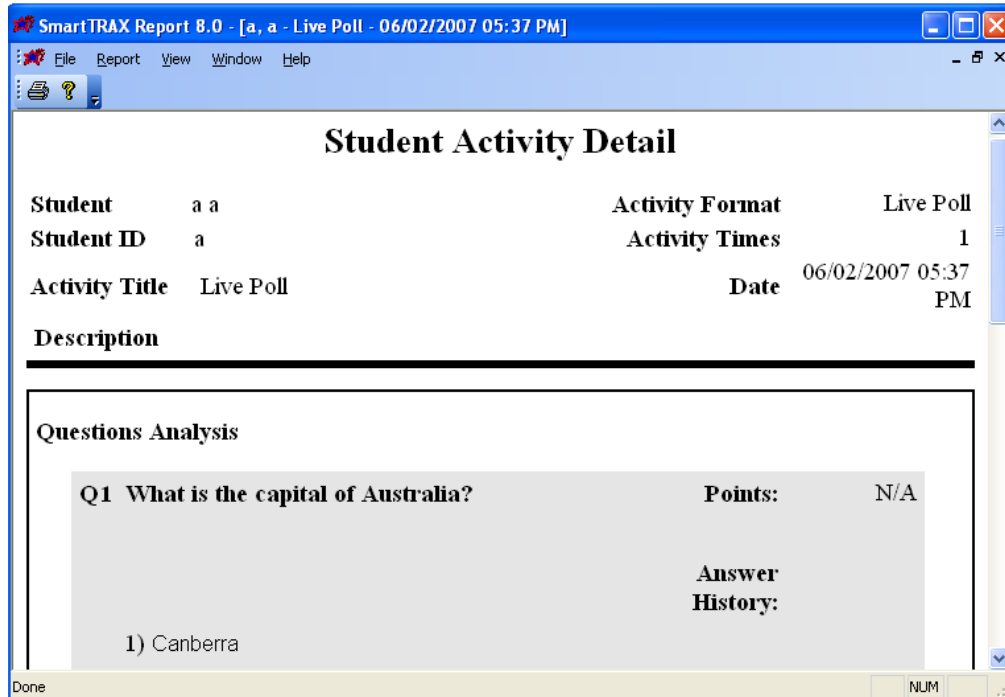
Lightning Activity: Points are awarded for speed if answered correctly. This format includes clues and facts. A scoreboard is shown after every question. Teacher controls the pace of the activity by pressing **Enter** to pause the activity.

4. Enter the **Activity Option Schemes** and select your default scheme. The teacher can customize the Answer time, Perfect Score time, etc. Click **Next**.
5. In the **Team Setup** window, select your default team (if you created one). Otherwise select **None** and click **Next**.
Using the Team feature is fundamental to the competitive nature of the LearnStar quiz and increases the students' motivation to do well.
6. The activity should be registered and each Nova user can synchronize and join the activity. Watch the red dots turn to green and launch the activity when ready.
7. During the activity, you can answer correctly as well as incorrectly, to demonstrate how the message at the top of the screen changes according to the answer. You'll notice the points available at the bottom right of the Nova screen. After each question, the total score for all teams/students is displayed.

Additional Modules worth mentioning

Report Module

LearnStar is also an advanced Reporting and Grading system - open the Report module and quickly browse to an Activity Report.



This powerful reporting engine documents and analyzes students' activities, providing teachers with individual test scores and review of multiple tests. Teachers can use this data to review an entire class's scores or compare individual scores to the rest of the class.

Editor Module

This Editor module, enables users to design and create new activities based on questions already in the database, or create new questions entirely