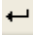
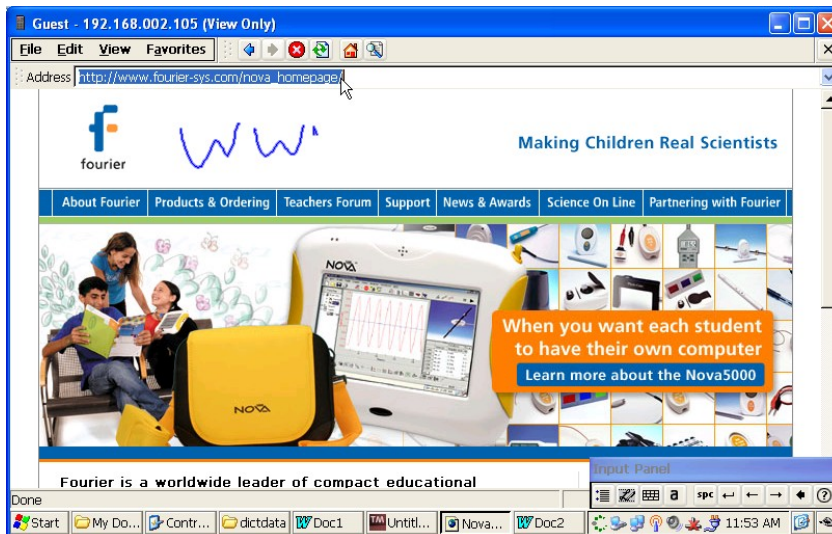


Nova5000 Applications Tutorial

Transcriber

Transcriber is the Nova5000's default handwriting recognition tool, from Microsoft. The application is automatically integrated into any application or window that accepts text entry, such as Word Pad, TextMaker, Internet Explorer, etc.

1. Take the stylus and go to **Start menu > Programs > Accessories > WordPad**.
2. Launch **Transcriber** either via the **Input Panel** in the system tray or **Start menu > Programs > Applications > Transcriber**.
3. Write a few basic words in the main window, such as *My name is John*. You'll see that the input is recognized and appears in the window.
4. Transcriber can be used in any window that accepts text entry so for example to find Web pages. Open **Internet Explorer** and tap on the address bar to highlight the URL. On the main window start typing another URL, such as www.google.com. Use the Enter button  on the Input panel to launch the page.



5. You can exit Transcriber mode by selecting a Keyboard from the Input Panel.

Media Player

Everyone is familiar with Media Player but perhaps you didn't realize that the Nova5000 is also equipped with multimedia capabilities.

1. You can play your mp3 music files from the Nova5000 by just double clicking on the file with your stylus. You can listen using the headset or Nova5000 external speakers.
2. To appreciate the Media Player's video capability Go to **My Documents** and open the Earthquake video file.

Note that the Media Player supports WMV, AVI and mpeg video formats and mp3, WAV and WMA audio formats.

PDF Viewer

The Nova5000 bundles an open source PDF viewer.

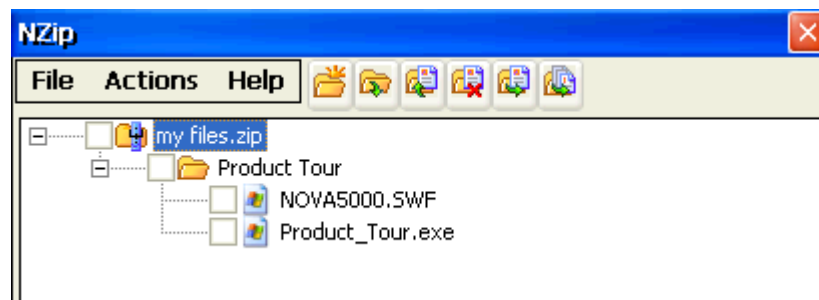
1. To view a pdf document on the Nova5000 go to **My Documents** and open the Nova5000 Brochure pdf.
2. To appreciate the ease-of-use click **Next page** to scroll through the brochure a few times and also **zoom in** to see the sharp quality of the pdf viewer.

Nzip

Another of Fourier's *in-house* developed applications is Nzip, the Nova's file compression and archive program, supporting standard Zip file formats.

NZip is fully compatible with software such as WinZip®, so you can seamlessly open your NZip files using WinZip and vice versa.

1. Copy a WinZip file to your Nova5000 e.g. zip a Word doc, and open this file on the Nova5000 in order to launch the NZip app.
2. Extract it to your desktop to see the complete parallel of NZip functionality with WinZip.



Sound Recorder



Developed by Fourier, this is a useful sound recording application similar to the sound recorder accessory on WinXP. It saves audio as a WAV file and can be played back using Media Player.

1. Connect a microphone to the Nova microphone jack and launch Sound Recorder from **Start > Programs > Accessories**.
2. Ensure the sound level is not set higher than the middle level and click **Record** to record a few seconds of your voice. Save the file in **My Documents**. Playback the file either in Sound Recorder or Media Player.



Nova Paint

Yet another in-house application developed by Fourier, Nova Paint is a drawing tool which allows you to create simple or elaborate drawings. These drawings are in color, and can be saved as bitmap, jpeg, gif or png files. It is very similar to the Microsoft Paint application. You can also use Nova Paint to draw on existing picture files, which you've saved on your Nova5000.


1. To launch Nova Paint go to **Start menu > Programs > Accessories > Nova Paint**.
2. Use the stylus to draw a picture using the many options available to you.
For example, select a color from the color palette, adjust the pencil width and with the Pencil feature, draw squiggly lines on the screen.
3. Draw auto shapes using the icons in the tool bar e.g.  and  or use the Paint Bucket tool to fill in color.



Save your drawing and then open it again using the Image Viewer or make it your Nova desktop wallpaper.

Internet Explorer

The Internet Explorer on the Nova5000 carries virtually all the features found on standard Win XP. You can appreciate this by simply browsing to a couple of websites and even surfing to a site which runs Java applets.

1. Launch Internet Explorer by double tapping the IE icon  on the Nova5000 desktop.
2. Using a USB keyboard or the virtual keyboard, type a URL into the Web browser's address bar. We will use <http://www.loc.gov> in this example.



3. Hit **Enter** on the keyboard for the browser to start accessing this website. Within a few seconds, the website will load on your browser window:



4. Using the stylus or mouse, browse the website by hitting one of the links on the page.
5. The Nova5000 Internet Explorer of course has the ability to save Favorites.
6. Go to **View > Internet Options** to experience just how similar these options are to the WinXP edition. It's also important to point out the Security and Privacy options here, invaluable to educators who need to restrict certain sites and Internet activities.